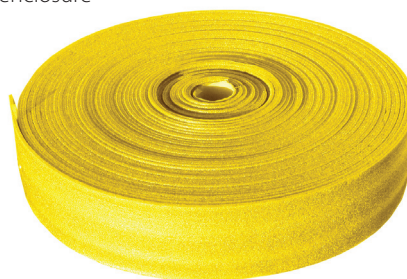


Before you start: Check the box contents against the list below.

Check the contents (this user guide covers both Overfloor & Screed kits - not all components are included in both kits)

1. Wunda Return Temperature Limiting (RTL) valve assembly & recessed enclosure
2. 25m Edge Strip
3. EPS 400 Overfloor Boards with 200 micron aluminium covering (EPS Kit only)
4. Wunda spray adhesive (EPS Kit only)
5. 100m Pert/Al/Pert floor heating pipe
6. Pipe Cutter
7. 16mm Pipe Reamer
8. 2x 16mm Pert/Al/Pert to 15mm compression fittings (supplied as repair coupling x1)
9. Thumb Staples (Screed Kit only)



2. 25m edge strip



5. 100m Pert/Al/Pert pipe



4. Wunda spray adhesive (included in EPS Kit only)



6. Pipe Cutter



8. 2 x 16mm pert to 15mm compression fittings (supplied as repair coupling x1)



9. Thumb Staples (included in Screed Kit only)



3. EPS 400 Overfloor Boards with 200 micron aluminium covering (included in EPS Kit only)



7. Pipe Reamer

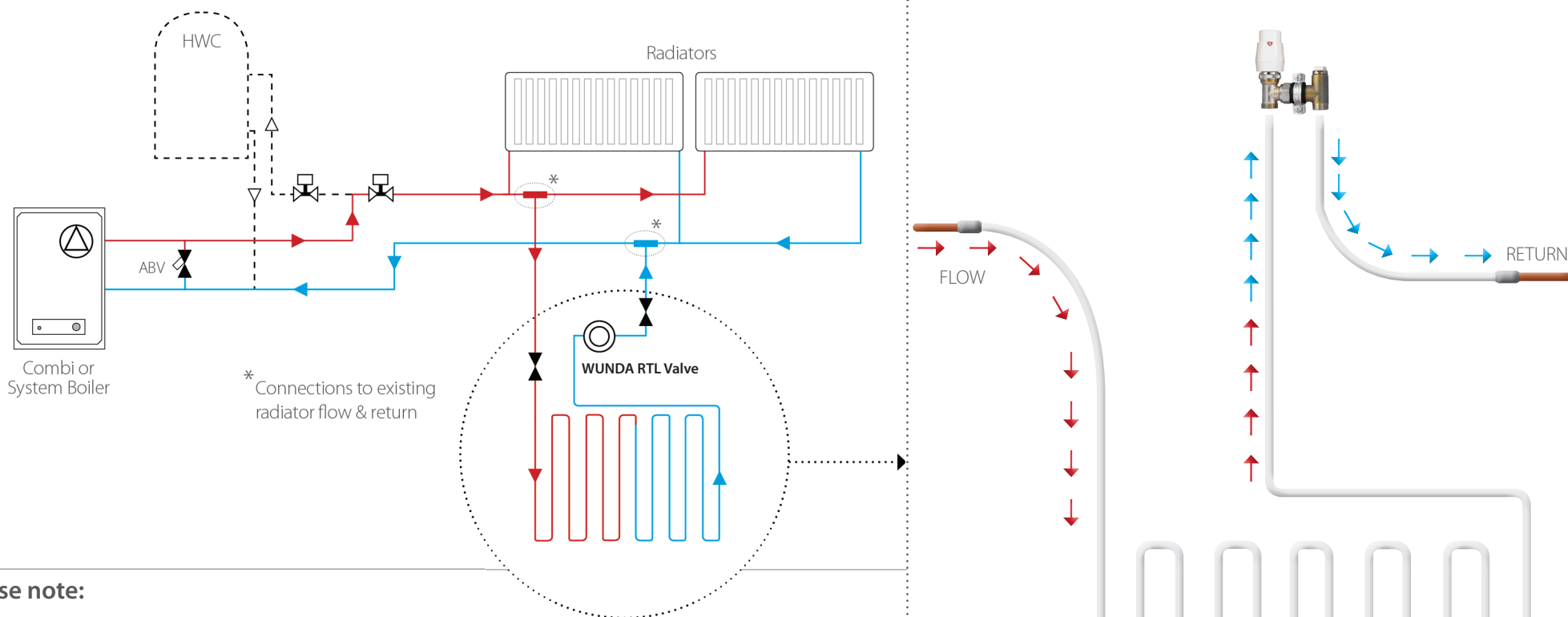


1. RTL valve assembly & recessed enclosure

1

In the unlikely event of any shortage please contact us and a replacement will be despatched immediately. Tel. 01291 634 145

Wunda RTL valve added to an existing radiator valve



Please note:

- The valve should be used with a maximum of 100m of 16mm pert pipe with pipe spacings set at 150mm
- The valve must be positioned on the return from the heated floor
- It is recommended that isolation valves are used at connections to the radiator flow and return, for filling and maintenance
- The supply pipework must not be less than 15mm
- The heating engineer must check that there is adequate flow available from the heating mains
- Floor temperature must be set in accordance with the relevant floor construction
- RTL valve has a range of 10 - 50°C
- Turn valve control head clockwise to reduce temperature, anticlockwise to increase temperature

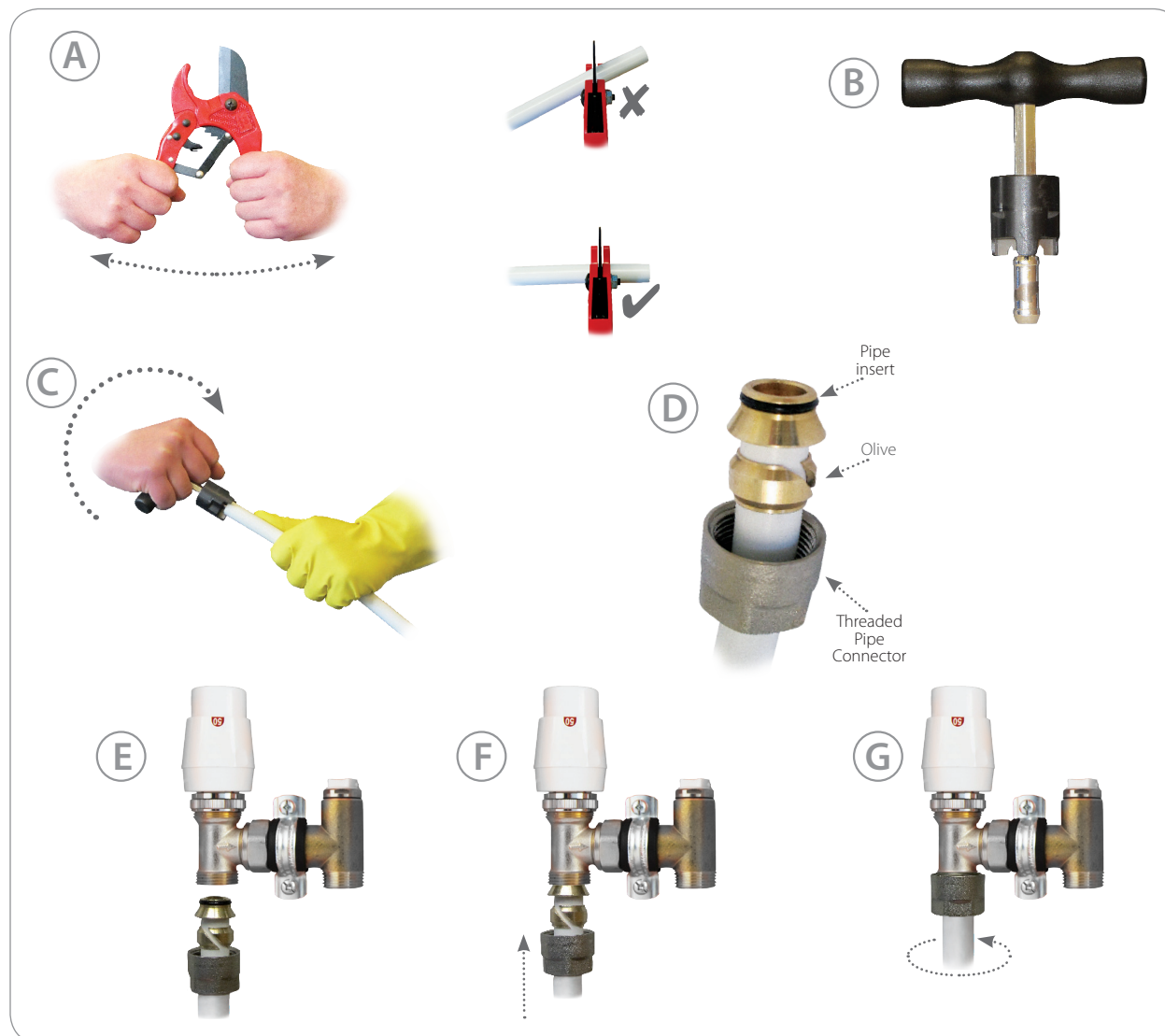
RTL Valve installation

This user guide is intended to be used in conjunction with the relevant floor heating installation guide specific to your floor construction.

A suitable location should be chosen for RTL valve (and cabinet) taking into account the location of the flow and return pipework and using this as a reference point to start and end the floor heating pipe.

Fitting pipes to the RTL valve.

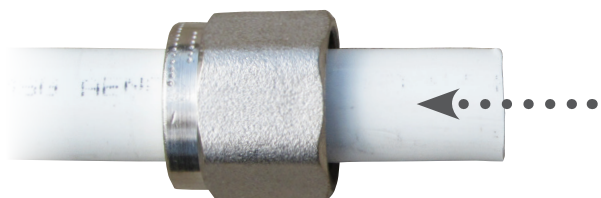
- 1) Using the pipe cutters, ensure pipe is cut cleanly and squarely, being careful not to cut the pipe short or it will not reach the valve (A).
- 2) The freshly cut end of pipe must now be reamed using a Wunda reamer (B).
- 3) Insert the reamer fully into the end of the pipe, so that the pipe is in contact with the 3 cutting teeth. Push and turn the reamer clockwise 2-3 turns, this will cut a chamfered finish to the pipe end. A good tip is to grip the pipe wearing a rubber glove, this will stop the pipe twisting in your hand (C).
- 4) Place the threaded pipe connector over the prepared pipe, followed by the split olive. Push pipe insert into the end of the pipe, ensuring it is fully seated against the end of the pipe (D).
- 5) Pipe is now ready to be connected to the valve, ensuring the pipe connector is fully tightened using a suitable spanner (E, F, G).



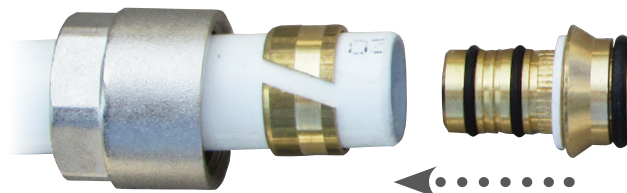
Fitting 16mm floor heating pipe onto 15mm flow & return pipe (radiator system)

To cut & ream pipe, follow steps 1-3 on previous page

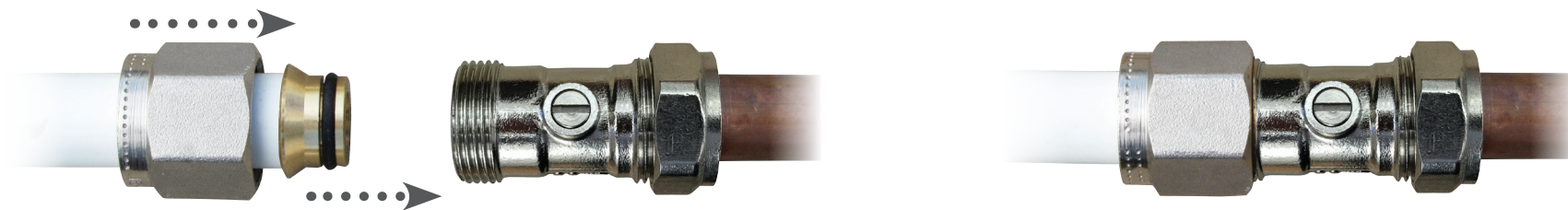
- 1 Slide nut onto cut and reamed pipe.



- 2 Fit split olive onto end of cut and reamed pipe, followed by the insert, ensuring it is pushed home and is square on the pipe end.



- 3 Tighten compression fitting onto suitable copper fitting (good practice, install an isolation valve at this pipe union)



Important information.

The return temperature limiting 15m single room kit has been designed specifically to cover a maximum floor area of 15m², if your area to be heated is in excess of this, do not fit this kit. Please call our technical or sales department who will advise you on the correct system for your project. This guide is intended to be used in conjunction with our overfloor panel installation instructions contained in fact sheet F01 - EPS 400 Overfloor Heating Guide.

Suitable floor finishes

Floor surface temperatures and wooden floor finishes

Before introducing heat into the floor heating system, check with your flooring supplier about maximum floor surface temperatures. Many natural and engineered wood floor finishes have a **maximum floor surface temperature of 27°C** and must be laid in conjunction with relevant underlay and moisture barriers. These floor finish types require the use of a thermostat and floor probe, please call our technical support team for more advice.

Laminate

Suitable floor finishes include laminates approved for use with floor heating.

Tiles

Ceramic, vitrified, quarry and porcelain tiles can be bonded directly onto Wunda overfloor panels (using our Mapei approved tile adhesive).

Natural stone tiles may require Wunda tile backer boards, which are laid as a floating floor before directly tiling onto the backer board using our Mapei approved tile adhesive.

Carpet & Vinyl

Carpet, vinyl & linoleum will require the use of wunda backer boards laid as a floating floor directly onto the overfloor system, giving an even surface on which to lay the floor finish.

Water Treatment (required to comply with product guarantee)

Water treatment suppliers such as Sentinel/Ffernox will be able to advise on water treatment dosage requirements. Flushing should be in accordance with BS:7593 to meet compliance following remedial work such as boiler replacement and the ongoing water treatment to ensure continued efficiency.

The water volume in a 16mm floor heating system can be calculated by multiplying the total linear length of pipe by a factor of 0.113 this will give the volume of water in litres.

In order to minimise corrosion, treatment of the water with an inhibitor is essential. BS code of practice 1992 details the steps necessary to clean a domestic heating system. The code recognises that it is not possible to clean a system without the application of a cleanser, it is advisable that the neutral (neither acid or alkaline) corrosion inhibitor is selected.

Wunda Group Plc operates a continuous product development programme to maintain our reputation for quality products and as such we do occasionally modify or amend the specification of our products in line with our strict quality control policy. Maintenance of the floor heating system is straightforward and the pump, manifold, gauges, valves and actuators are designed for continuous operation over many years. Wunda Group Plc recommends regular use of floor heating systems, this will ensure flow gauges, pumps and valves are kept in good working order.

All information in this publication is given in good faith, and believed to be correct at time of going to press. No responsibility can be accepted for any errors, omissions or incorrect assumptions. Users should satisfy themselves that products are suitable for the intended purpose and application.

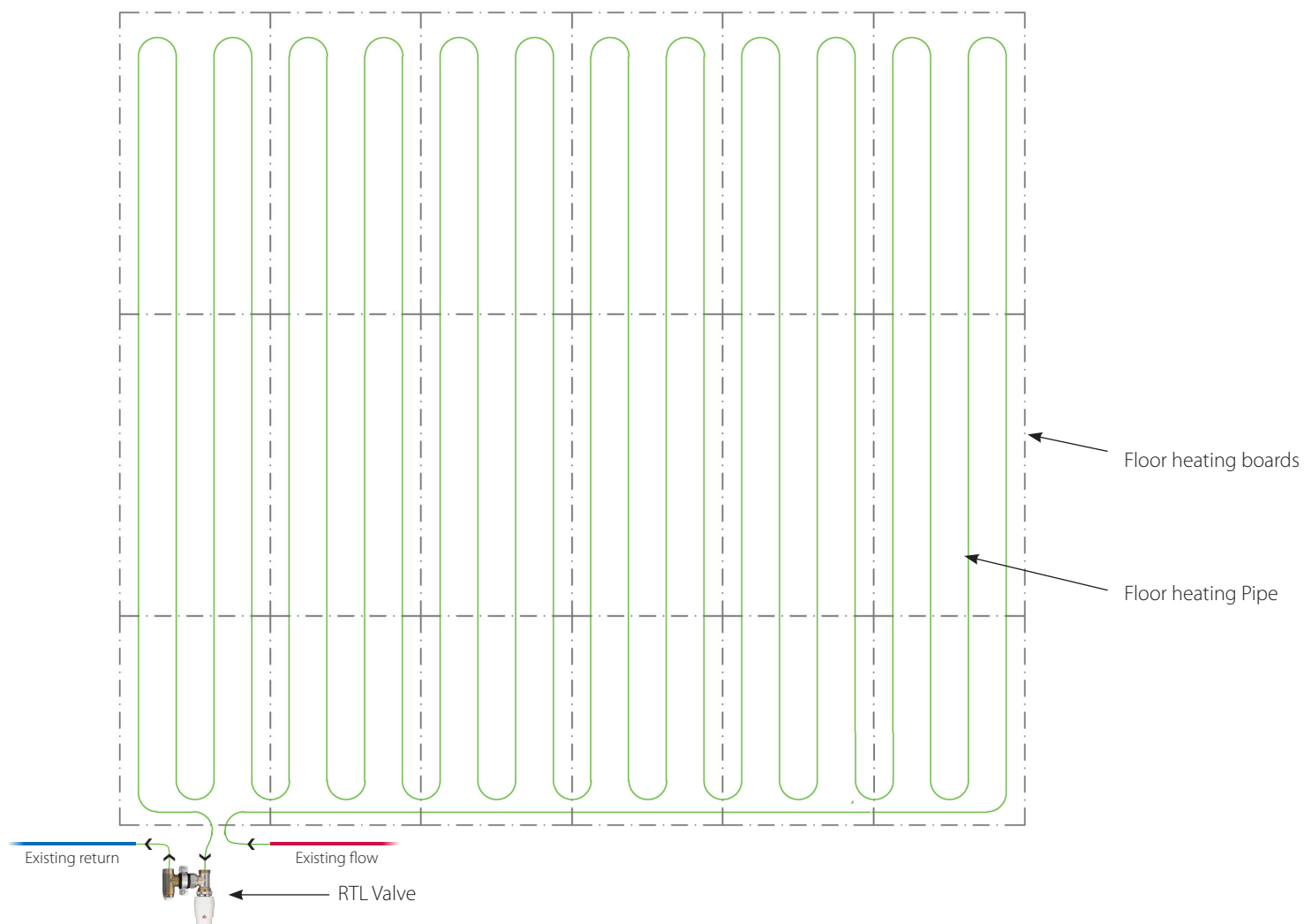


Example panel & pipe layout drawing

Please note:

Panels shown as dotted line are included in EPS overfloor kit only.

Screed Kits require use of thumb staples to secure pipe.



Your Notes:

7

Tech support opening hours are subject to change. Please check our website for latest info.

Your Notes:

8

Tech support opening hours are subject to change. Please check our website for latest info.