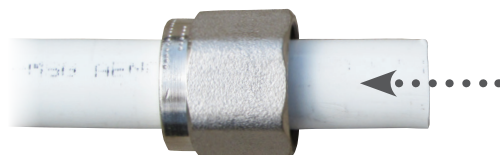


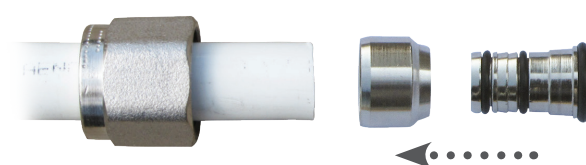
16mm nut & insert can be used to connect Wunda 16mm Pert/Alu/Pert pipe onto a 15mm BSP fitting.

Instructions.

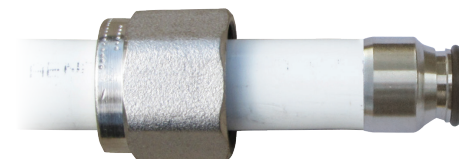
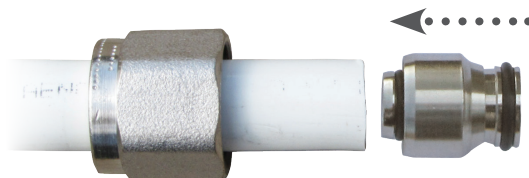
- 1 Slide nut onto cut and reamed pipe



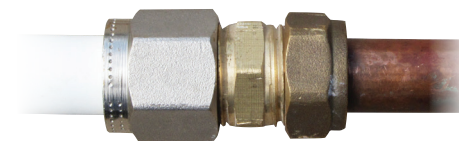
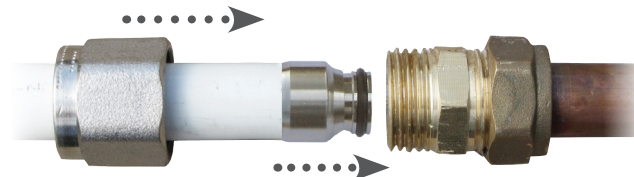
- 2 Combine both parts of the insert



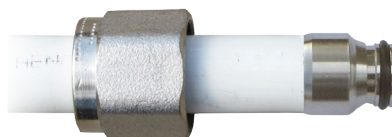
- 3 Fit insert onto end of cut and reamed pipe, ensuring insert is pushed home and is square on the pipe end.



- 4 To ensure good crimp of fitting onto pipe, tighten onto dummy fitting first.



- 5 Remove dummy fitting and check crimp of nut and insert before connecting to target fitting.



Important Tip:

Please refer to fact sheet T02 for information on reaming a pipe.

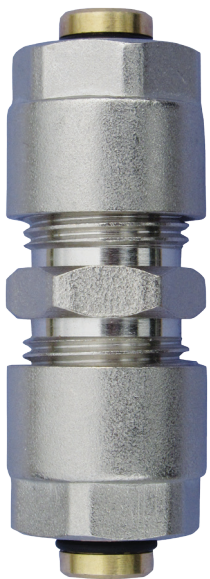
1



Nut and Insert

16mm Repair coupling for use with Wunda 16mm Pert/Alu/Pert floor heating pipe, when a repair is the only option.

This fitting must be fitted in a clearly accessible location and under no circumstances be buried in screed or concrete.



Repair Coupling

Instructions.

- 1 Undo both ends of the repair coupling and remove nuts and olives from each end.
- 2 Ensure the two ends of pipe to be joined have been cut square and prepared with a 16mm Wunda pipe reamer.
- 3 place a nut over each end of the pipe to be joined, along with an olive on each end.
- 4 Push an insert into either end of the pipe to be joined ensuring they are pushed fully into the pipe.
- 5 finally tighten the nuts ensuring pipe is secure and joint is pressure tested.

