

Pioneering for You

wilo

HVAC OEM Competence Centre

Wilo-Para ****.-***/6-43/SCU** Datasheet



Wilo-Para **-*** /6-43/SCU

Heating



Field of application



Underfloor Heating

Para 15-130/6-43/SCU-12

WILO

High Efficiency pump for heating application

-	Inline cast iron pump housing
15	Threaded connection DN15 (25, 30: also available)
130	Pump housing length 130 (180: also available)
6	6,7 = delivery head in [m] at Q = 0 m ³ /h
43	Max power consumption
SCU	The pump is controlled by Push button technology SCU = ΔP -v, ΔP -c (specific underfloor system setting), constant speed I, II, III
12	Control box orientation 12 o'clock (3, 6, 9 o'clock: also available)

Approved fluids
(other fluids on request)

Heating water (in accordance with VDI 2035)
Water-glycol mixtures (max. 1:1; above 20%
admixture, the pumping data must be checked)

Power

Energy Efficiency Index (EEI)	≤ 0.20
Max. delivery head	6,7 m
Max. volume flow	3,2 m³/h

Permitted field of application

Temperature range for applications in HVAC systems at max. ambient temperature. Limit values for continuous operation at maximum rated power	Of 58°C = 0 to 100°C Of 62°C = 0 to 90°C Of 66°C = 0 to 80°C Of 71°C = 0 to 70°C
Maximum static pressure	PN10

Electrical connection

Mains connection	1~230 V +10%/-15%, 50/60 Hz (IEC 60038 standard voltage)
------------------	--

Motor/electronics

Low voltage directive	2006/95/EC Conform
Electromagnetic compatibility	EN 61800-3
Emitted interference	EN 61000-6-3 EN 61000-6-4
Interference resistance	EN 61000-6-2 EN 61000-6-1
Protection class	IPx4D
Insulation class	F
RoHS / REACH	Compliant but not submitted

Minimum suction head at suction port to avoid cavitation at water pumping temperature

Minimum suction head at 50/95°C	0.5/4.5 m
---------------------------------	-----------

Motor data

Para	Speed	Power consumption 1-230 V	Current at 1-230 V	Motor protection
	n	P1	I	-
	rpm	W	A	-
**/6 SCU	2430 - 4300	3-43	0.04-0.44	Integrated

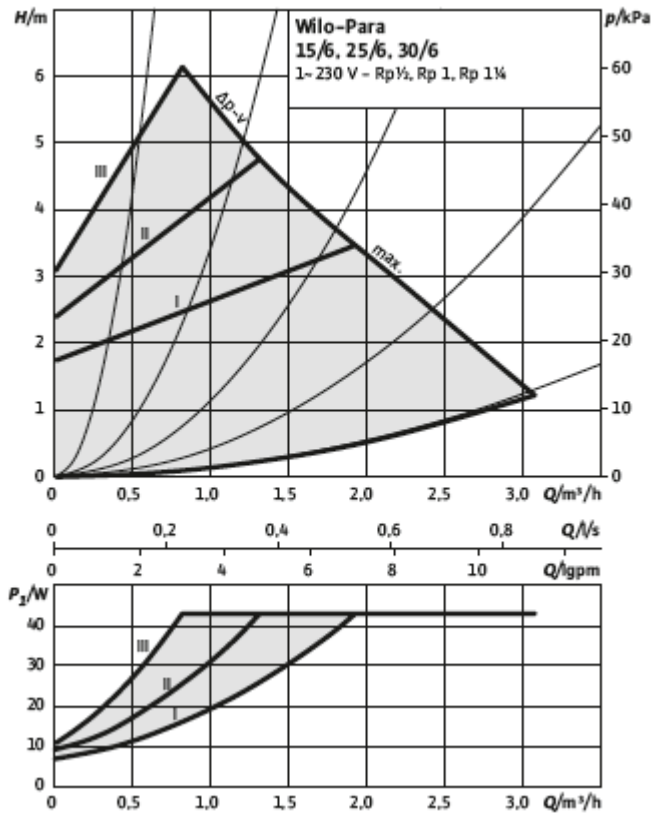
Materials

Para	Pump housing	Impeller	Pump shaft	Bearing
**/6 SCU	Cast iron with cataphoresis treatment	PP composite with GF 40%	Stainless steel	Carbon, metal impregnated

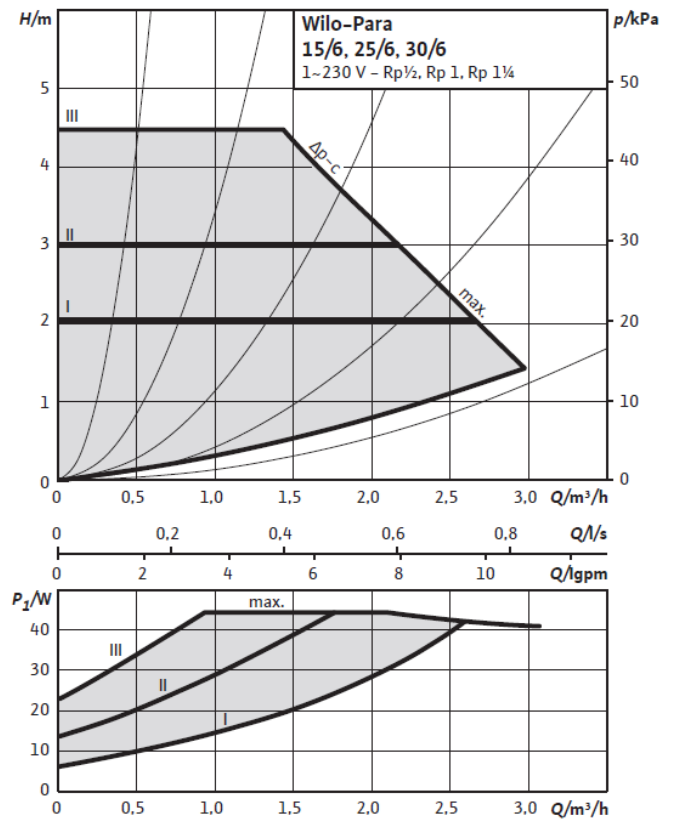
wilo

Hydraulic operational area

$\Delta p-v$ (variable)

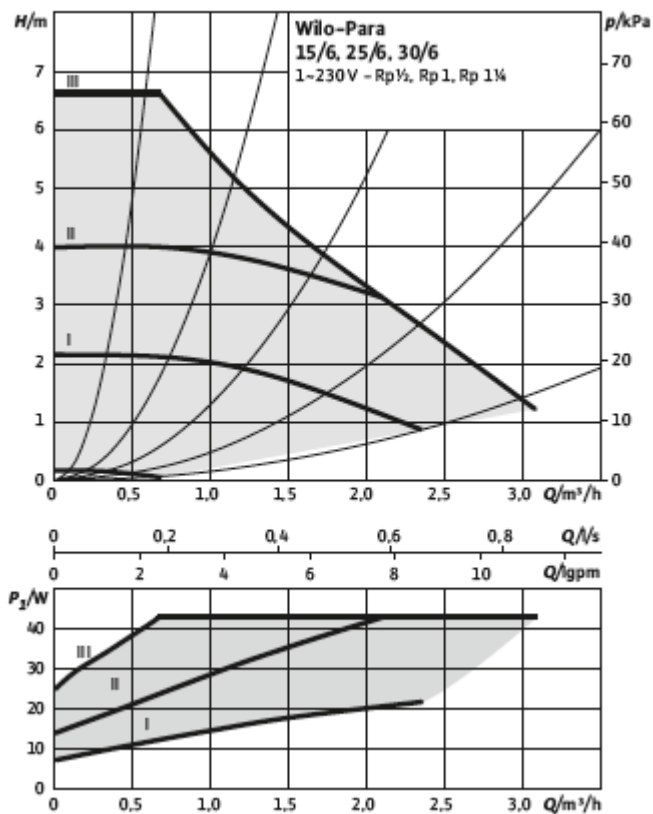


$\Delta p-c$ (constant)



Heating

Constant speed I, II, III



Datasheet Wilo-Para **/6 SC 04/07

Hydraulic operational area

Standard factory setting*

*If needed, this factory setting is customisable on request.

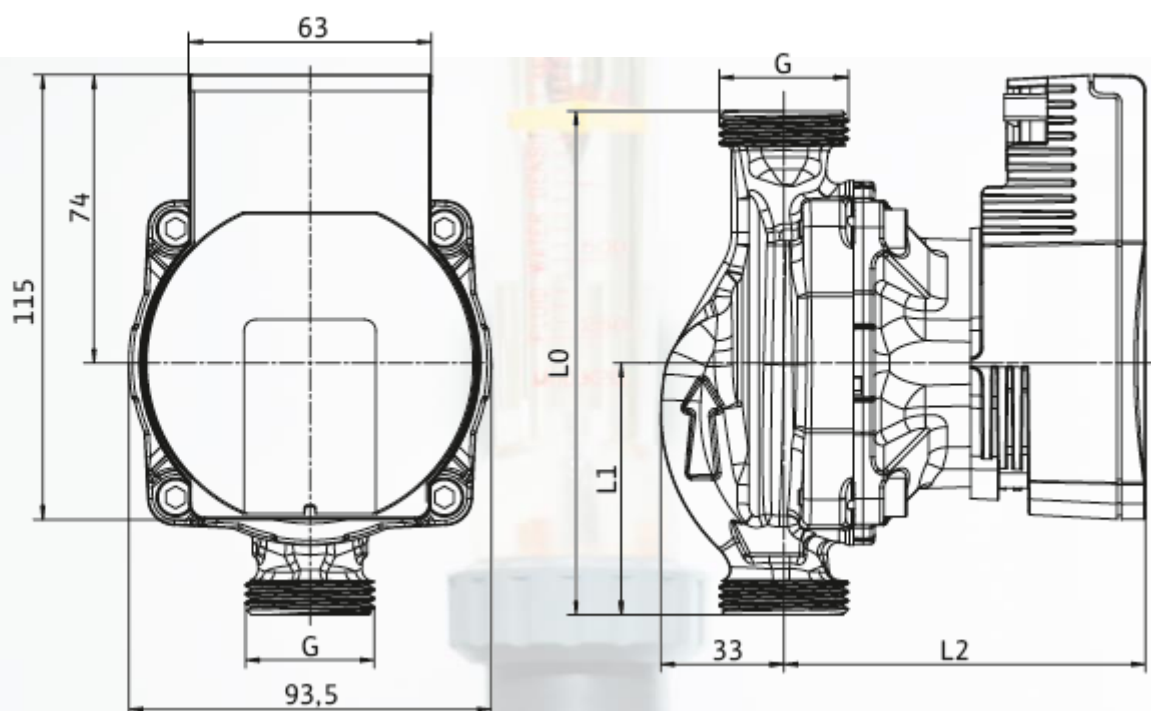
e.g. $\Delta p-V$ / Speed III, $\Delta p-c$ / Speed III, or other

Heating

Dimensions

wilo

Wilo-Para



Heating

Technical data

Designation	Para 15-130/6-43/SC	Para 15-130/7-50/SC	Para 15-130/8-75/SC
Threaded pipe union	Rp ½		
Thread	G 1		
Overall length l_0	130 mm		
Dimensions L1	65 mm		
Dimensions L2	94 mm		105 mm
Weight approx. m	1.54 kg		1.7 kg

Technical data

Designation	Para 25-130/6-43/SC	Para 25-180/6-43/SC	Para 25-130/7-50/SC	Para 25-180/7-50/SC	Para 25-130/8-75/SC	Para 25-180/8-75/SC
Threaded pipe union	Rp 1					
Thread	G ½					
Overall length l_0	130 mm	180 mm	130 mm	180 mm	130 mm	180 mm
Dimensions L1	65 mm	90 mm	65 mm	90 mm	65 mm	90 mm
Dimensions L2	94 mm				105 mm	
Weight approx. m	1.66 kg	1.78 kg	1.66 kg	1.78 kg	1.8 kg	2 kg

Technical data

Designation	Para 30-180/6-43/SC	Para 30-180/7-50/SC	Para 30-180/8-75/SC
Threaded pipe union	Rp 1¼		
Thread	G 2		
Overall length l_0	180 mm		
Dimensions L1	90 mm		
Dimensions L2	94 mm		105 mm
Weight approx. m	1.96 kg		2.1 kg



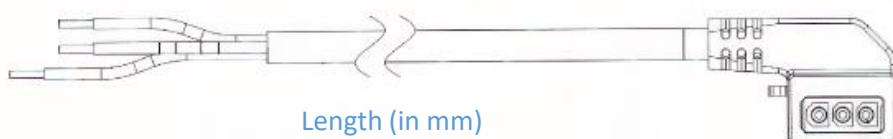
Electrical Power connections

Integrated Molex 3-way connector



Heating

Accessories power cable



Available mains cables

Overmoulded power connector with brass end splices and type Facon PR260 on terminal box side (disconnection possible)

cable length 500mm	4530966
cable length 1000mm	4524578
cable length 1500mm	4530763
cable length 2000mm	4527857

Not assembled



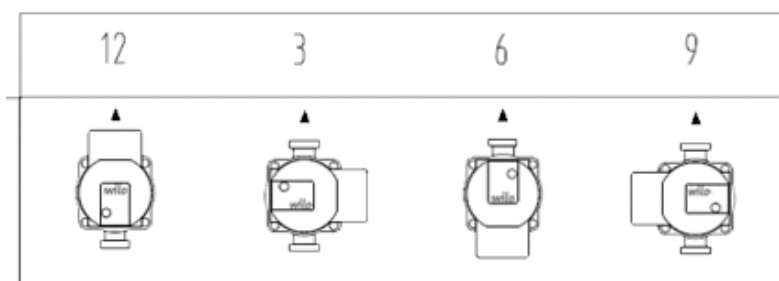
Molex 3
ways



WS8

Electrical Box orientation

▲ Flow direction





Pioneering for You

WILO Group – Strategic Business Unit OEM

WILO Intec
50 av. Casella
18700 - Aubigny sur Nère
France
T +33 2 48 81 62 62
information@wilointec.com
www.wilo-oem.com

