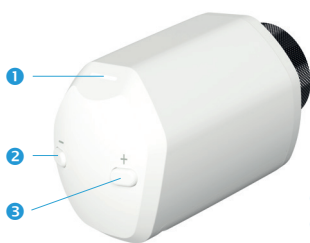


WUNDA

Welcome to WundaSmart

Welcome to your Smart Radiator Head



- 1 Control LED,
- 2 Decrease temperature -
- 3 Increase temperature +

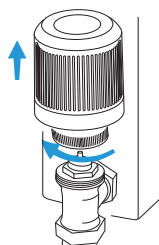


- 4 Battery compartment
- 5 Mounting ring
- 6 Motorised pin

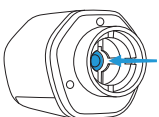
To install the Smart Radiator Head first ensure that your **Smart HubSwitch** is correctly installed and registered. (See: Smart HubSwitch Installation Guide).

Mounting Smart Radiator Head on valve

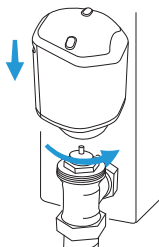
The Smart Radiator Head has a mounting ring designed for M30×1.5 threaded TRVs. For radiators with any other valve type, an adapter should be used.



A. Detach the used radiator head from the radiator and place proper adapter if required.



B. On your Smart Radiator Head, put the batteries into the compartment 4 or remove the Tabs.



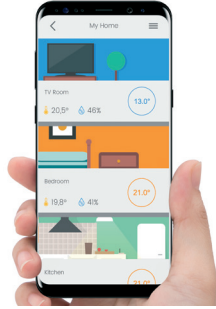
C. Press buttons 2 3 on the front for 5 seconds until the LED 1 emits continuous white light. The valve stem pusher 6 inside the Radiator Head will retract as far as possible.

D. You now have 60 seconds to install the Smart Radiator Head on to the valve with the motorised pin retracted.

E. After 60 seconds the motorised pin will return to the starting position. When installed, the Smart Radiator Head will carry out automatic calibration.

Smart Radiator Head connection

- A. Open the WundaSmart application and log in to your system, select the Room in which you wish to install the Smart Radiator Head in and then enter the Setting tab.
- B. Select Radio Devices at the bottom of the settings menu, choose 'add a new device' and then select 'Add Head'.
- C. You have 30 seconds to pair the head. Again press buttons ② ③ on the front of the Smart Radiator Head and wait until the LED ① starts emitting continuous green light. (about 8 seconds)
- D. The installed Smart Radiator Head will appear on the device list in the Room.



Operating Smart Radiator Head

By pressing buttons ② or ③ You can switch between the preset temperatures in your app. Manual changes are valid for 2 hours.



Blue LED:
Reduced
Temperature



Green LED:
Comfort
Temperature



Red LED:
Comfort +
Temperature



Blinking Blue LED:
Raditor Head is Closed
(Antifreeze Settings)



Blinking Red LED:
Raditor Head is Open
(max 35°C)

Safety instruction

Cleaning

Use only a dry, soft cloth for cleaning. The use of water or organic solvents is prohibited.

Battery change

It is forbidden to recharge exhausted non rechargeable batteries!

Use 2x1.5V - alkaline battery LR6 (AA).

Remove the battery cover and insert two AA batteries. Make sure the batteries are correctly oriented. The battery replacement process is described in the section "Smart Radiator Head Fitting".

Battery disposal

Radio-controlled system components are powered by LR6 (AA) type batteries. When replacing batteries, be sure to dispose of used components properly.

Need our help?

Our designated support staff are on hand to answer all your questions



help@wundasmart.com



0800 083 2677